

TEXTURE

Monophonic

Music with only one part (one note at a time).



*You can have as many players or singers as you want on the same part as long as it is the only part. No chords!

Antiphonal

Two groups of musicians play/respond to each other from two different performing positions.



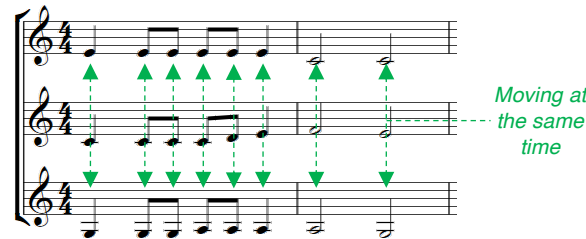
Melody & Accompaniment

A melody (tune) plus some accompanying chords or ideas.



Homophonic

All parts move in chords at the same time.



*Homophonic = same sound... they have the same rhythm

Polyphonic

Several (2 or more) independent lines of music.



*Polyphonic = many sounds... several (two or more) different tunes

Call And Response

One idea played/sung and then another performer(s) responding.



Octaves

When parts move together, an octave apart.



*Same note name but different pitch.

What Is The Instrument's Role

Melody – The tune.

Accompaniment – The parts supporting the tune.

Countermelody – A second melody that fits with the main tune.

Bass Line – The lowest sounding part.

Alberti Bass

Accompaniment found mainly in the left hand part of piano music.

Don't play all three notes of the triad together; break them up into four equal notes. Usually lowest, highest, middle, highest.



Why doesn't Mr Edwards like playing an Alberti Bass? It gives him the EBGBs.

Pedal

A long or repeated note – usually in the bass.



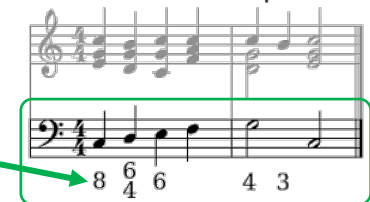
Drone

Long or repeated notes – usually a 5th apart.



Basso Continuo

The part given to instruments in The Baroque Period that played the bass line and chords, accompanying the melody, using **figured bass**.



*Harsichord bass viol organ lute